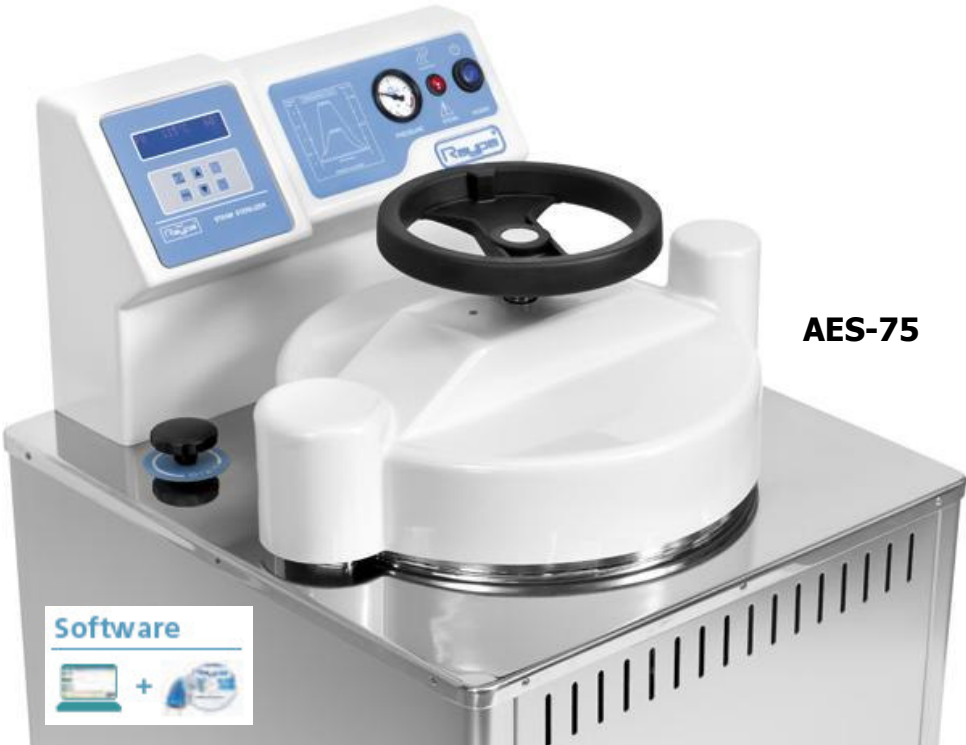


# STERILCLAV steam sterilizers



**AES-75**

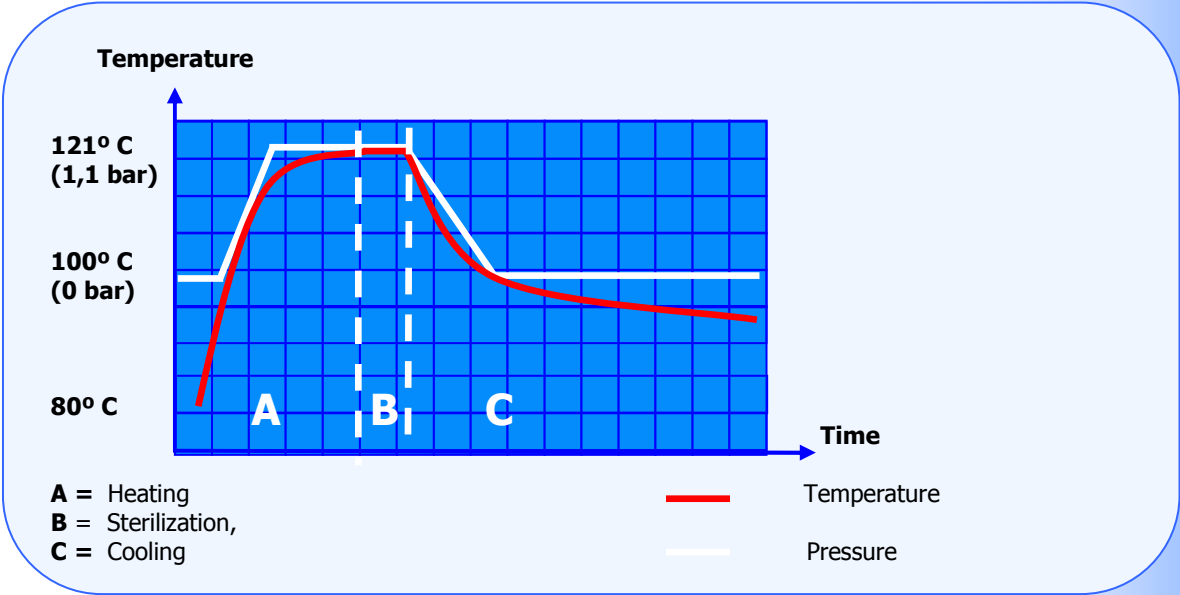


Heart probe (option)

**Advantages:**

- Programmable auto-start
- Agar mode
- Control software
- Heart probe (optional)
- Connection to PC (USB)
- External or integrated printer (optional)

**Sterilization cycle graph**



**Autoclaves**

# STERILCLAV steam sterilizers

## Intended use:

Suitable to sterilize: culture media, glass, liquids, plastic, metallic elements, waste bags, etc.

## Features:

External case, top, chamber and lid made of AISI-304 stainless steel  
 Total control by microprocessor  
 Ten sterilization programs: six programs are user free.  
 Includes RS-232 port to connect a printer or to a PC.  
 It includes inlet in chamber for an external validation probe.  
 Supplied with protecting grid for the heater.  
 Unsteaming pushbutton.  
 Manual valve to drain.

## Safety:

Safety valve and thermostat.  
 Hydraulic door blocking system while existing positive pressure in the chamber.  
 Open lid sensor

Reference	Litres	Capacity	Ø x H.	H x L x D in cm	Temp. °C	Max. bar	Power W	Kg.	Time range
AES-12	15 L	12 L	25 x 27 cm	52 x 49 x 50	100-139	2,5	1.000	35	3 -180 min.
AES-28	33 L	28 L	30 x 40 cm	101 x 51 x 56	100-139	2,5	2.000	60	3 -180 min.
AES-75	79 L	75 L	40 x 60 cm	109 x 62 x 73	100-139	2,5	3.200	85	3 -180 min.
AES-110	115 L	110 L	40 x 85 cm	133 x 63 x 73	100-139	2,5	4.500	114	3 -180 min.
AES-150	175 L	150 L	50 x 75 cm	131 x 76 x 85	100-139	2,5	6.000	140	3 -180 min.

Models AES-12, AES-28 and AES-75 are supplied with 230 V mono-phase 230 V. Models AES-110 and AES-150 are supplied with 400V tri-phase supply (tri-phase 230 V optional)

## STERILCLAV steam sterilizers Accessories

### Stainless steel Baskets, perforated

Reference	for Autoclave	Dimensions	Nº Baskets/ autoclave	Weight kg.
CI-12	AES-12	225(Ø) x 215 mm	1	1
CI-28	AES-28	280(Ø) x 200 mm	2	1,5
CI-75	AES-75	380(Ø) x 260 mm	2	2,5
CI-75	AES-110	380(Ø) x 260 mm	3	2,5
CI-150	AES-150	475(Ø) x 360 mm	2	4



### Stainless steel Baskets, not perforated

Reference	for Autoclave	Dimensions	Nº Baskets/ autoclave	Weight kg.
CCI-12	AES-12	225(Ø) x 215 mm	1	1
CCI-28	AES-28	280(Ø) x 200 mm	2	1,5
CCI-75	AES-75	380(Ø) x 260 mm	2	2,5
CCI-75	AES-110	380(Ø) x 260 mm	3	2,5
CCI-150	AES-150	475(Ø) x 360 mm	2	4



### Stainless steel wire baskets

Reference	for Autoclave	Dimensions	Nº Baskets/ autoclave	Weight kg
CV-12	AES-12	220(Ø) x 200 mm	1	1
CV-28	AES-28	270(Ø) x 200 mm	2	1,5
CV-75	AES-75	370(Ø) x 280 mm	2	2,5
CV-75	AES-110	370(Ø) x 280 mm	3	2,5
CV-150	AES-150	470(Ø) x 250 mm	3	4



## STERILCLAV steam sterilizers Accessories

### Stainless steel cylinders to sterilize pipettes/Petri dishes

Reference	Dimensions	Pipettes	Petri dishes	Weight kg
CEP-7040	70 (Ø) x 400 mm	X		1
CEP-1340	130(Ø) x 400 mm	X		1
CEP-1326	130(Ø) x 260 mm		X	1
CEP-1347	130(Ø) x 400 mm		X	1



### Support with height adjustable shelves

Reference	For autoclave
SRA-1	AES-28
SRA-2	AES-75
SRA-3	AES-110
SRA-4	AES-150



### Thermal Printer

It prints number of program, number of cycle, temperature, date and hour of the run. Error messages are also printed. To be installed in our facilities.

**Reference: IT**



### Table top printer

It prints number of program, number of cycle, temperature, date and hour of the run. Error messages are also printed.

**Reference: ITS**



## STERILCLAV steam sterilizers Accessories

### Flexible "Heart" probe PT-100

Recommended for sterilizing liquids in flasks of 1 L or bigger. The control is done from the microprocessor. This accessory should be installed in factory.

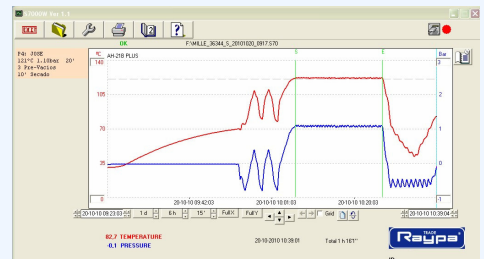
**Reference: PT-2**



### PC connection kit for RS232

Kit for the connection and use of the communication software between the equipment and the PC, through the RS232 interface. It includes: Female USB-RS232 Converter. CD with corresponding drivers included  
Male-male DB-9 cable to connect converter with the equipment

**Reference: SOFT-RS232**



### Sterilisation control tape

Sterilisation indicator tape.

**Reference: TEST-CT**

